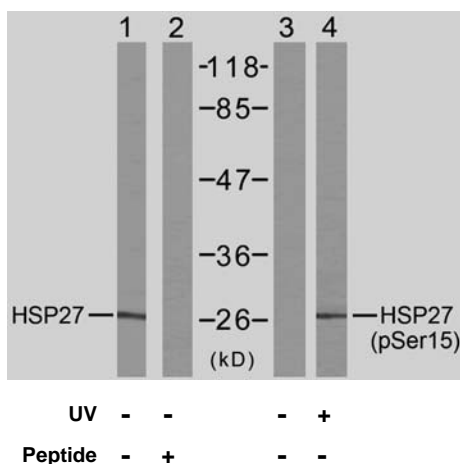


Rabbit anti HSP27 (Ab-15)

- Catalog Number:** AP21144
- Amount:** 100µl (for 10 Western Blotting)
- Form of Antibody:** Rabbit IgG in phosphate buffered saline (without Mg^{2+} and Ca^{2+}), pH 7.4, 150mM NaCl, 0.02% sodium azide and 50% glycerol.
- Storage/Stability:** Store at -20°C/1 year
- Immunogen:** The antiserum was produced against synthesized non-phosphopeptide derived from human HSP27 around the phosphorylation site of serine 15 (G-P-S^P-W-D).
- Purification:** The antibody was affinity-purified from rabbit antiserum by affinity-chromatography using epitope-specific immunogen.
- Specificity/Sensitivity:** HSP27 (Ab-15) antibody detects endogenous levels of total HSP27 protein.
- Reactivity:** Human
- Applications:** WB: 1:1000
- Swiss-Prot No. :** P04792
- References:** Tremolada L, et al. (2005) Proteomics. 5(3): 788-795.
McGregor E, et al. (2004) Mol Cell Proteomics. 3(2): 115-124.
Benn SC, et al. (2002) Neuron. 36(1): 45-56.
MacDonald JA, et al. (2002) Mol Cell Proteomics. 1(4): 314-322.



Western blot analysis of extract from HeLa cells using HSP27 (Ab-15) antibody (AP21144, Lane1 and 2) and HSP27 (phospho-Ser15) antibody (pAP11164, Lane 3 and 4).

For Research Use Only

Contact & Ordering Information: Angio-Proteomie, 11 Park Drive, Suite 12, Boston, MA 02215, USA. Fax: (480) 247-4337, angioproteomie@gmail.com